

ULTRASONIC PESTREPELLER

PESTREPELLER is effective in controlling mice, rats, roaches, flies, crickets, silverfish, water bugs, moths, ants, and most other common pests.

Laboratory research has shown ultrasonic sound waves attack the auditory and nervous systems of most common pests causing them pain and discomfort.

With 130 decibels of sound pressure, pests will give up their source of food, water and shelter and move on. These high-intensity sound waves are out of the range of hearing of humans and most household pets such as dogs, cats, fish and birds, and farm animals.

PESTREPELLER will not interfere with TV, radios, electronic burglar alarms, fire or smoke detectors, pacemakers, hearing aids or other electronic equipment.

PESTREPELLER does not harm plants either.

CHARACTER:

It effectively protects an area measuring 2,000 to 2,500 unobstructed square feet (185 – 232 square meter). After plugging **PESTREPELLER** in, you will notice a small red LED indicates **PESTREPELLER** is operating properly. **PESTREPELLER**'s unique test button on the back panel, when depressed, causes the unit to shift its output down into the audible range of humans for a reassuring check of its ultrasonic output. The shrill, siren-like sound produced simulates the sound pests hear continually.

PESTREPELLER automatically sweeps the ultrasonic range of 30,000 Hz to 65,000 Hz. The adjustment knob allows the rate of this sweep to be varied to prevent pests from developing immunity to a preselected single sweep rate.

USAGE

While you first install **PESTREPELLER**, turn the knob fully to the left or to the right. Each month later, twist the knob just a bit in the opposite direction. Depressing the test button before and after the adjustment let you hear the slight difference in the sweep rate.

You will begin to notice the effects of **PESTREPELLER** in a few days. There will be an absence of rodent activity. Perhaps you will notice an increase in insect activity during this time due to the ultrasonic sound waves driving these pests from hiding. In a short while, they'll be gone also.

While the pests are being driven away, they are undoubtedly leaving their eggs and larvae behind which are not affected by the ultrasonic sound waves. Incubation will continue and they'll hatch

as usual. At this point, however, **PESTREPELLER** ultrasonic output will begin to attack these hatchling's auditory and nervous systems, driving this new generation away.

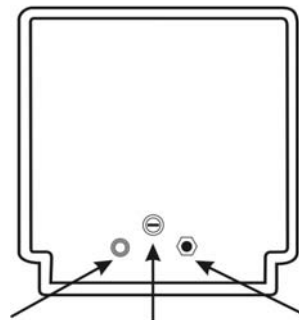
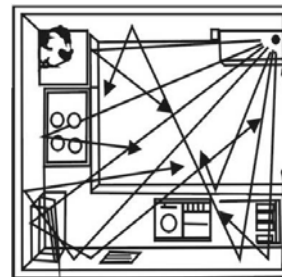
In 4 – 6 weeks, the infestation should be over and you'll be free of pests. Leave **PESTREPELLER** plugged in for year round, day and night pest control. It costs only about 1 ½ cent a day to operate. No more dangerous chemicals to buy, no more messy traps to clean.

NOTICE:

Do not place **PESTREPELLER** on carpeted surface, behind furniture, draperies or other soft objects as they will absorb the sound waves.

Do not place **PESTREPELLER** next to your ear before performing the check.

Do not use outdoors or let the unit come in contact with water.



DC POWER INPUT SWEEP SPEED CONTROL KNOB TEST BUTTON

SPECIFICATIONS:

- Dimensions: 90 x 80 x 102 mm
- Weight: 175 g (main unit only)
- Power supply: Switching Power Adaptor, Input: 100 – 240 VAC, Output: 9VDC 200mA
- Power consumption: 1 ½ Watt.
- Frequency range: 30,000 Hz – 65,000 Hz (continuously variable)
- Output sound pressure: 130 dB
- Effective range: 185 – 232 square meter (unobstructed)